

# Envision 2035 Task Force

**Participate. Bring Your Ideas. Imagine the Possibilities.**

Minnehaha County Planning & Zoning

Ryan Streff

# Agenda – May 31, 2012

- 1) Updated Land Use Maps
  - 1) Group Activity & Comment
- 2) Future Trail/Park Maps
  - 1) Group Activity & Comment
    - 1) Wall Lake
    - 2) Bucher Prairie
    - 3) Others?
- 3) Corridor Plans
  - 1) Group Activity & Comment
    - 1) HWY 38 (Sioux Falls to Hartford)
    - 2) HWY 42 (West of Sioux Falls)
    - 3) Others?
- 4) Building Eligibility Clustering
- 5) Public Comments
- 6) Next Meeting Details
  - 1) June 28, 2012



# MINNEHAHA COUNTY FUTURE LAND USE MAP



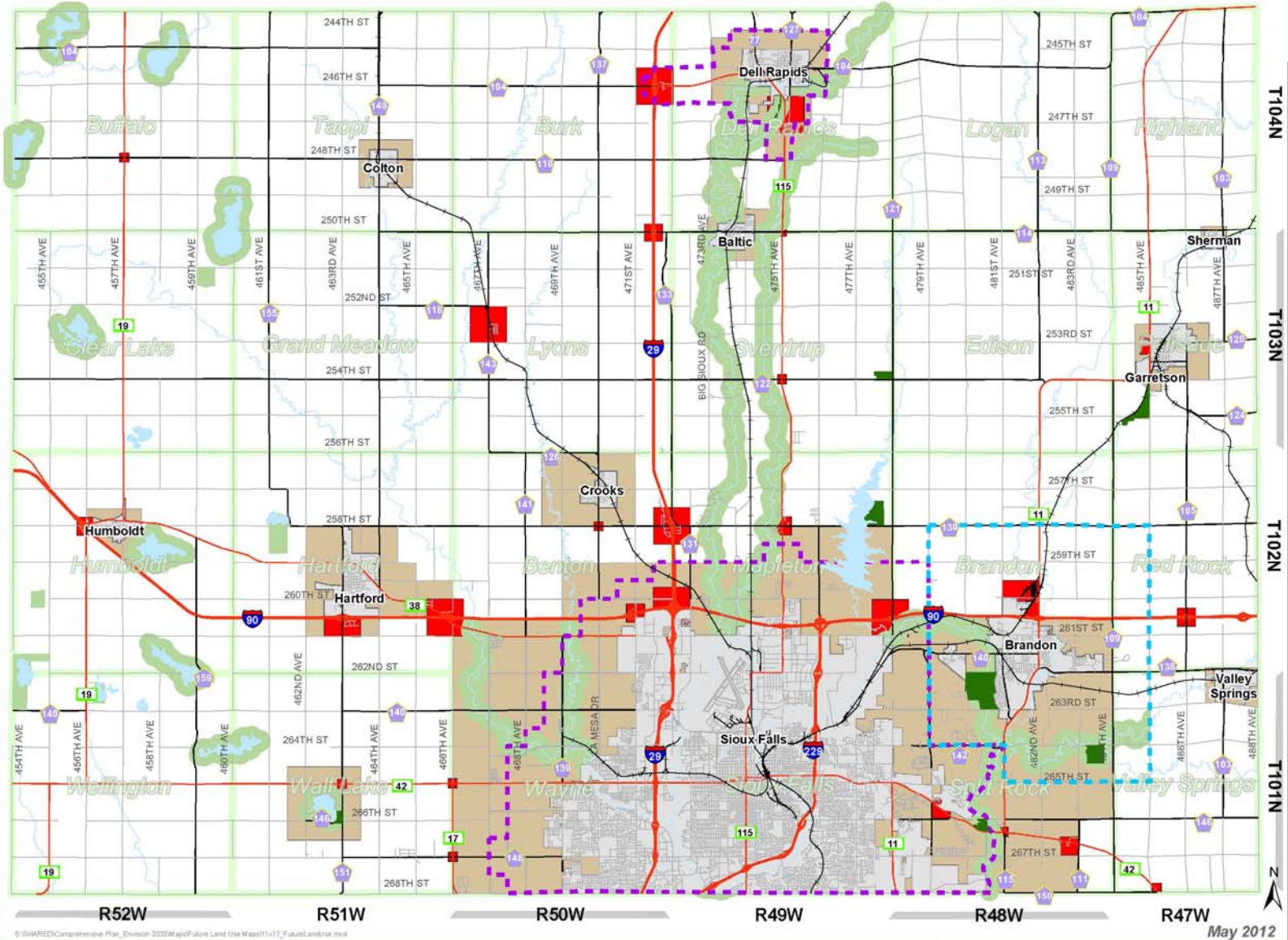
- Railroad
- Parks
- Joint Planning
- Joint Platting
- Lake
- River
- City
- Open Spaces / Greenways
- Transition Areas

### Rural Service Area

- 1/4 mile
- 1/2 mile
- 1 mile

1 inch = 2.5 miles

Disclaimer:  
The Data is provided "as is" without warranty or any representation of accuracy, timeliness or completeness. The user is responsible for determining accuracy, completeness, timeliness, merchantability and fitness for or the appropriateness for use and safety on the requestor. Minnehaha County makes no warranties, express or implied, as to the use of the Data. There are no implied warranties of merchantability or fitness for a particular purpose. The requestor acknowledges and accepts the limitations of the Data, including the fact that the Data is dynamic and is in a constant state of maintenance, correction and update.



© SHARED/Comprehensive Plan\_Envision 2035M and Future Land Use Map(11x17\_F)final.mxd

May 2012



# MINNEHAHA COUNTY FUTURE LAND USE MAP



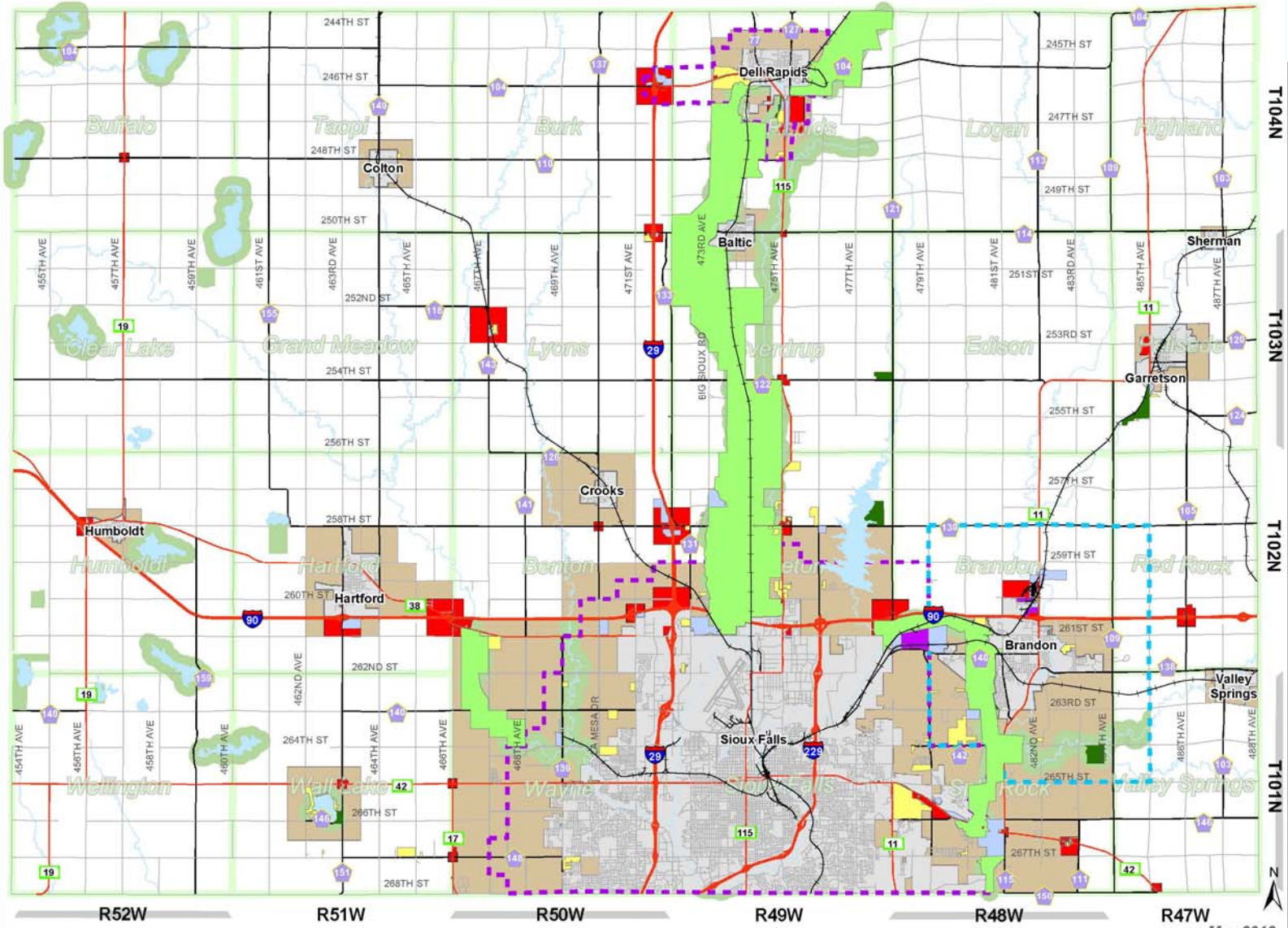
- Railroad
- C
- I-1
- I-2
- PD
- RC
- RR
- Parks
- Joint Planning
- Joint Platting
- Lake
- River
- City
- Open Spaces / Greenways
- Transition Areas

### Rural Service Area

- 1/4 mile
- 1/2 mile
- 1 mile

1 inch = 2.5 miles

Disclaimer:  
The Data is provided "as is" without warranty or any representation of accuracy, timeliness or completeness. The user is responsible for determining accuracy, completeness, timeliness, merchantability and fitness for or the appropriateness for use and safety on the requestor. Minnehaha County makes no warranties expressed or implied as to the use of the Data. There are no implied warranties of merchantability or fitness for a particular purpose. The requestor acknowledges and accepts the limitations of the Data, including the fact that the Data is dynamic and is in a constant state of maintenance, correction and update.



© SHARED/Comprehensive Plan, Envision 2035 and Future Land Use Map 11x17\_F Land Use.mxd

May 2012

# MINNEHAHA COUNTY FUTURE BIKE TRAIL MAP

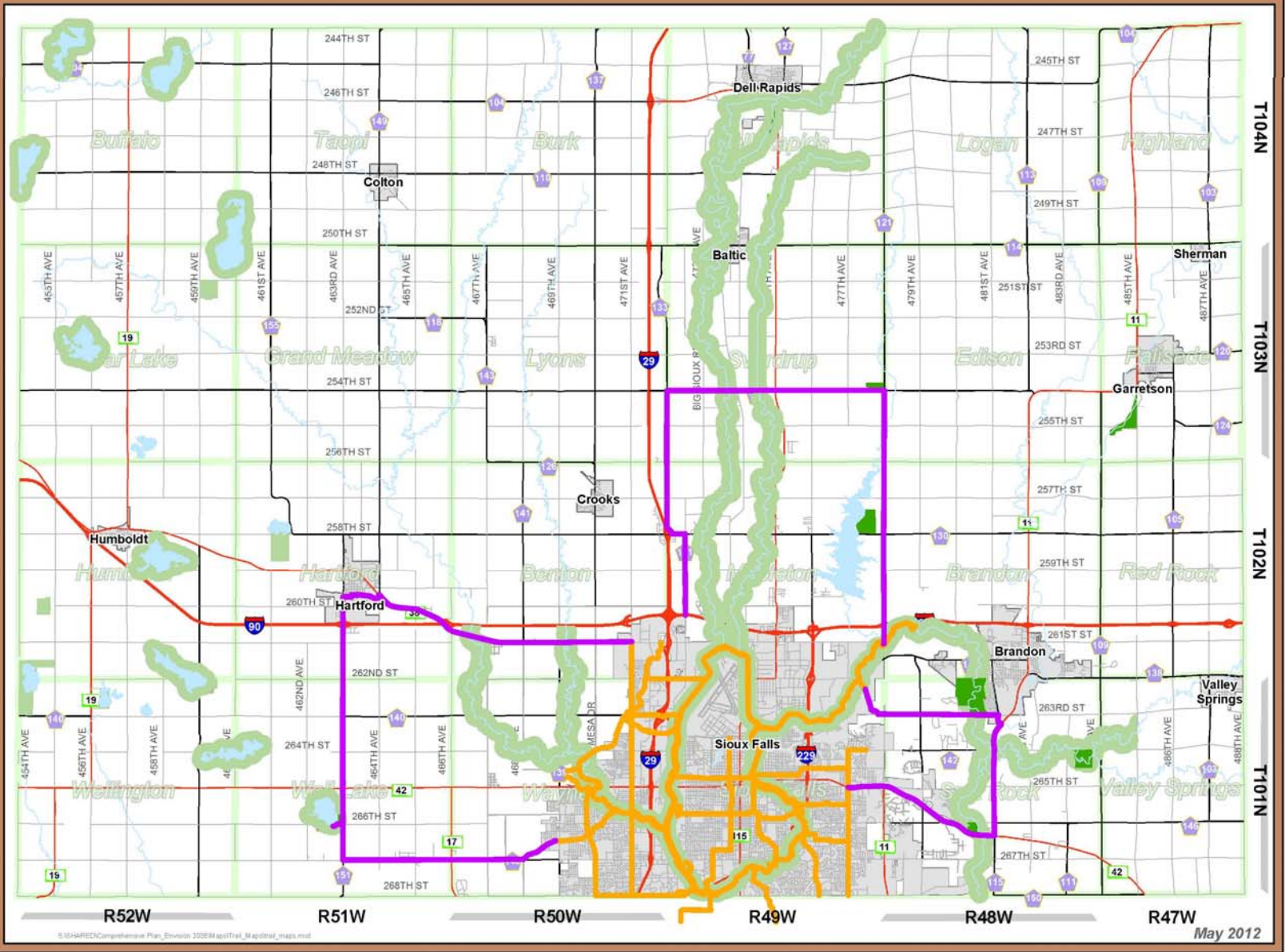


-  Sioux Falls Bike Trails
-  Future Bike Trails
-  Parks



1 inch = 2.5 miles

Disclaimer:  
The Data is provided "as is" without warranty or any  
representation of accuracy, timeliness or completeness.  
The burden for determining accuracy, completeness,  
reliability, merchantability and fitness for use of the  
information for any particular use rests solely on the user.  
Minnehaha County makes no warranties express or implied  
as to the use of the Data. There are no implied warranties  
of merchantability or fitness for a particular purpose.  
The user acknowledges and accepts the limitations of  
the Data, including the fact that the Data is dynamic and is  
in a constant state of measurement, correction and update.



© 2012 HREZ Comprehensive Plan, Division 2025M, gplTrail\_M, gpltrail\_map.mxd

May 2012



# MINNEHAHA COUNTY FUTURE CORRIDOR MAP



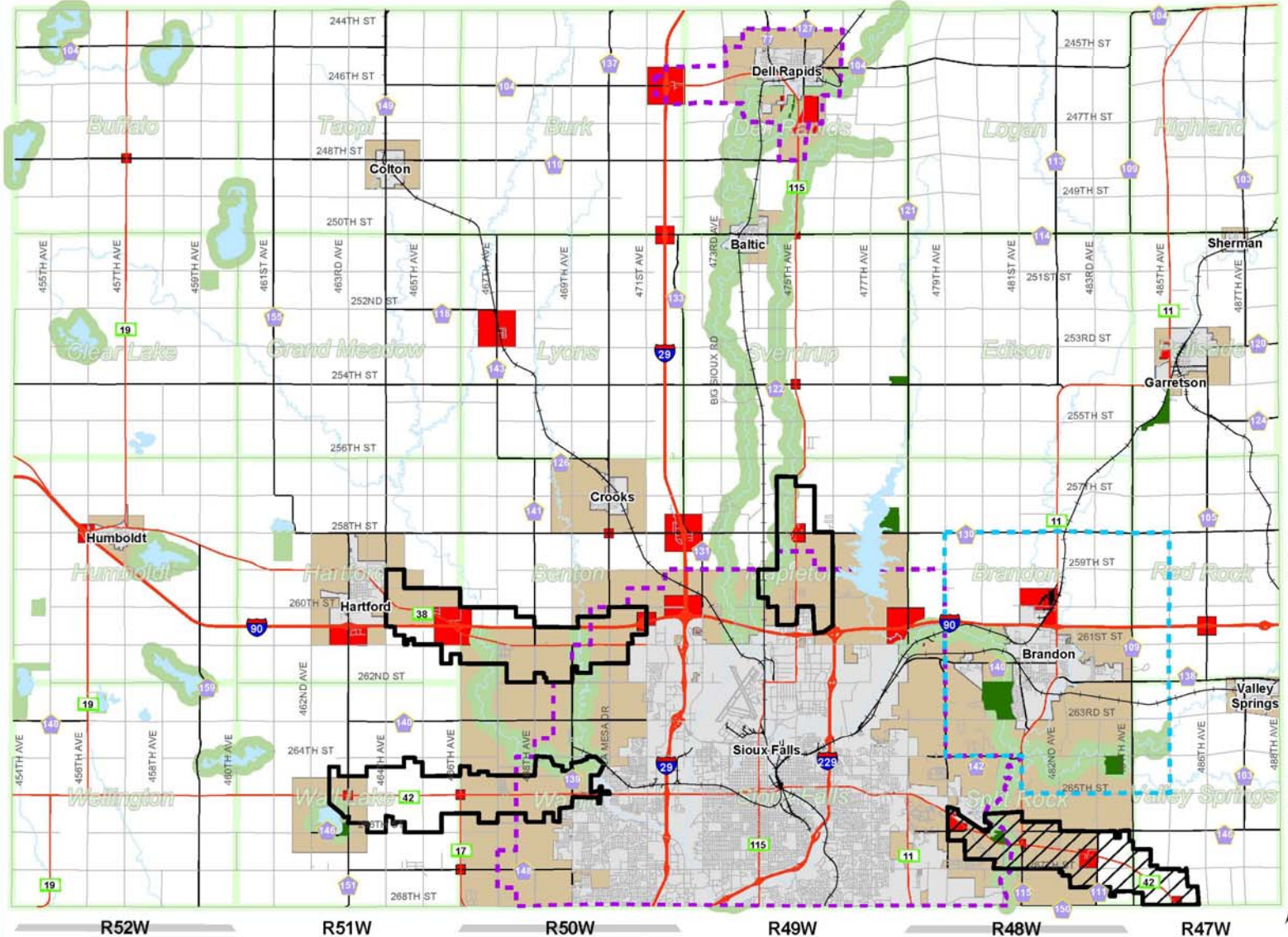
- Railroad
- Red Rock Corridor
- Hwy 115 Corridor
- Hwy 42 Corridor
- Hwy 38 Corridor
- Parks
- Joint Planning
- Joint Platting
- Lake
- River
- City
- Open Spaces / Greenways
- Transition Areas

### Rural Service Area

- 1/4 mile
- 1/2 mile
- 1 mile

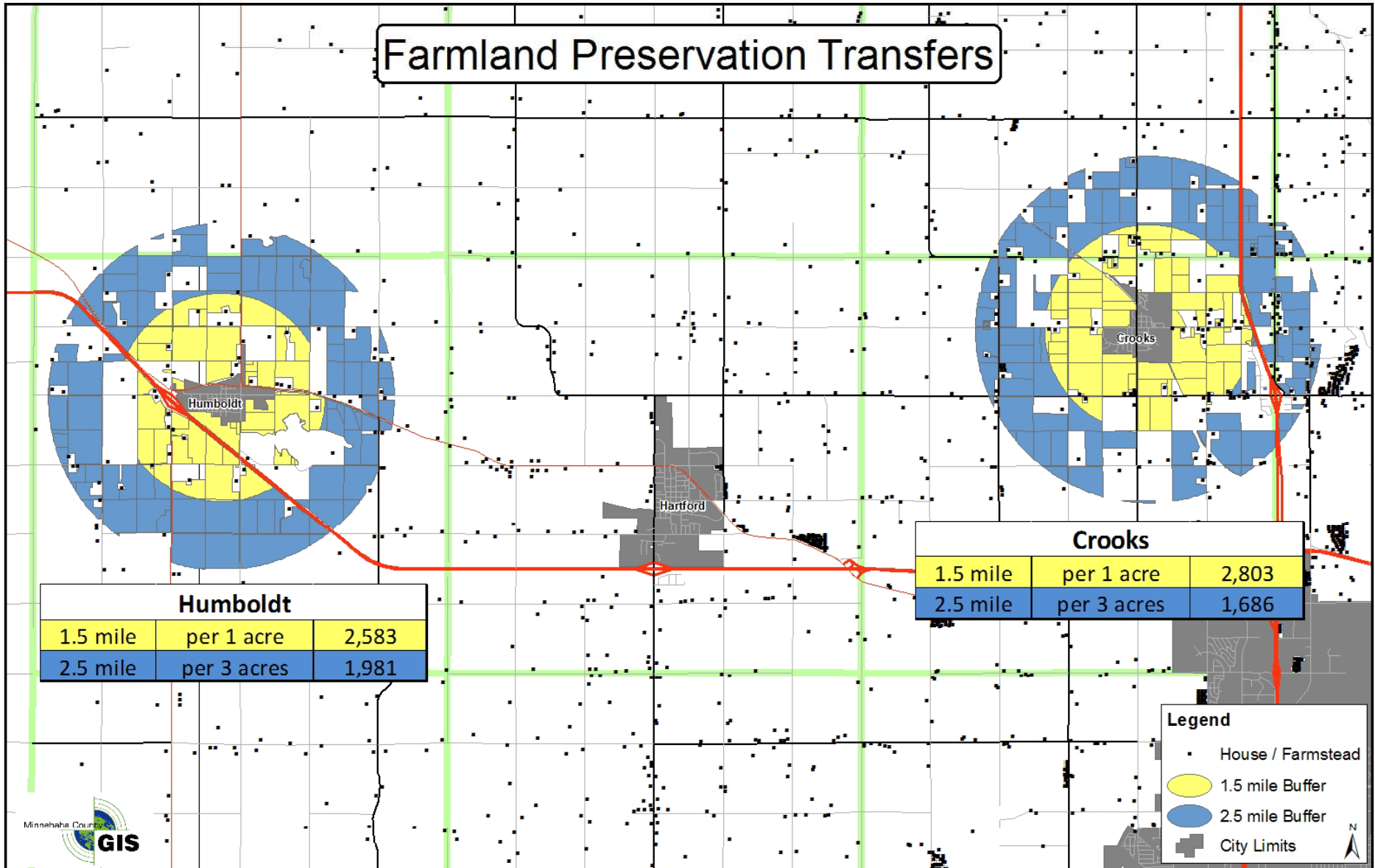
1 inch = 2.5 miles

Disclaimer:  
The Data is provided "as is" without warranty as to any representation of accuracy, timeliness or completeness. The burden for determining accuracy, completeness, timeliness, merchantability and fitness for the appropriate use for use rests solely on the user. Minnehaha County makes no warranty, express or implied, as to the use of the Data. There are no implied warranties of merchantability or fitness for a particular purpose. The user acknowledges and accepts the limitations of the Data, including the fact that the Data is dynamic and is in a constant state of maintenance, correction and update.



Within Humboldt & Crooks = 9,053 BE / Within Minnehaha County = 9,354 BE

## Farmland Preservation Transfers




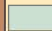
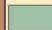



# Minnehaha County Available Building Eligibilities Per Township



## Total Eligibility: Township

-  Total Eligibility
-  Available Eligibility
-  Used Eligibility

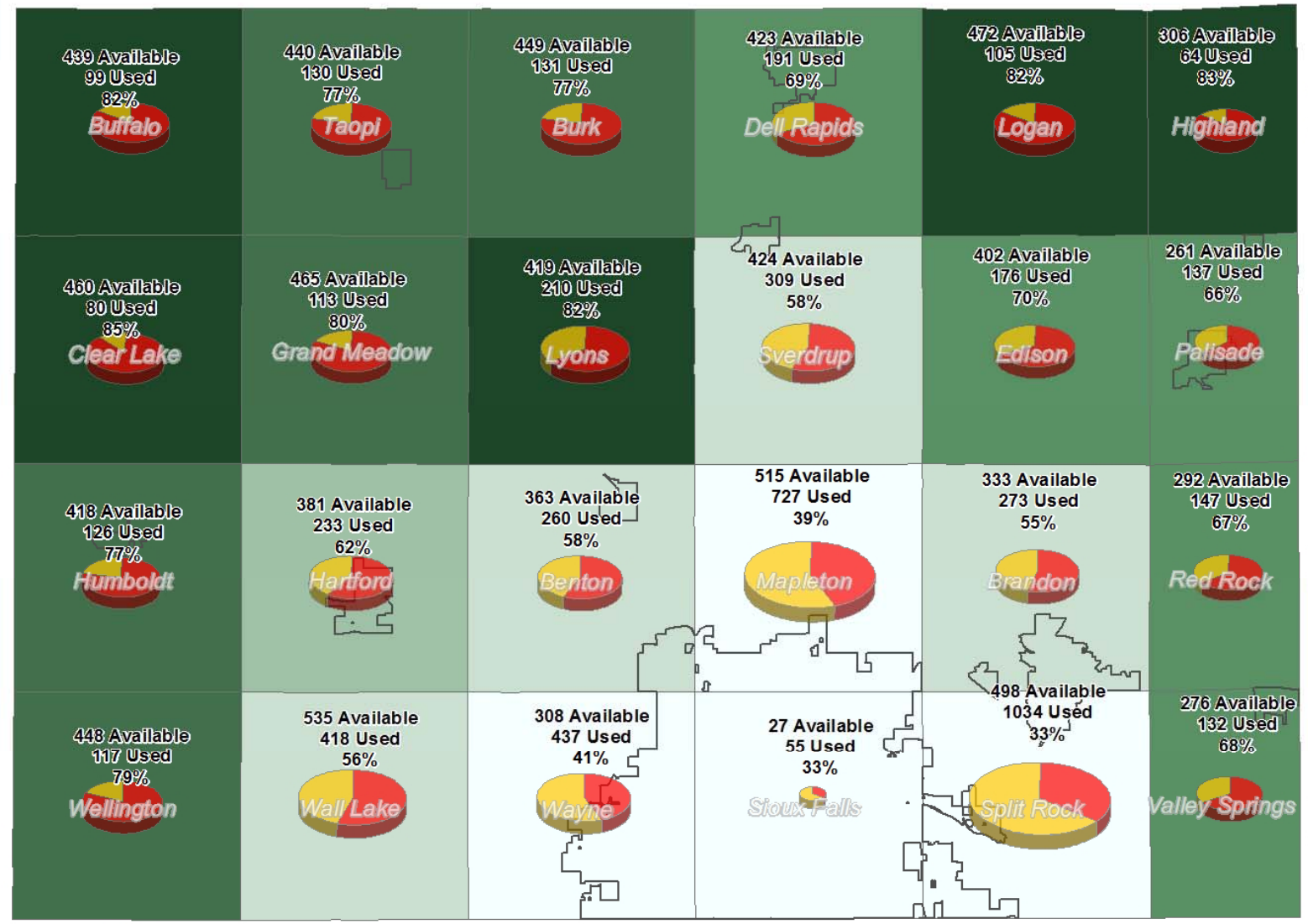
## % Total Available for Building

-  33 - 41
-  42 - 58
-  59 - 62
-  63 - 70
-  71 - 80
-  81 - 85

1 inch = 2.5 miles



Disclaimer:  
The Data is provided "as is" without warranty or any representation of accuracy, timeliness or completeness. The burden for determining accuracy, completeness, timeliness, meritability and fitness for or the appropriate use for use rests solely on the requester. Minnehaha County makes no warranties express or implied as to the use of the Data. There are no implied warranties of merchantability or fitness for a particular purpose. The requester acknowledges and accepts the limitations of the Data, including the fact that the Data is dynamic and is in a constant state of maintenance, correction and update.



R52W

R51W

R50W

R49W

R48W

R47W

T104N

T103N

T102N

T101N

©SHARED Comprehensive Plan\_Envision 2035/1.apd/Future Land Use/11/11/17\_BldgEligby.mxd

Feb 2012



# Other Questions or Comments?

[envision2035.minnehahacounty.org](http://envision2035.minnehahacounty.org)

**Next Meeting?**

**June 28, 2012**